



2nd Annual International Forum on the Development of the Lake Chad Region

- *Overview of the Lake Chad Basin Commission and the Annual International Forum on the Development of the Lake Chad Region.*

- *By Hycinth Banseka, Technical Director, LCBC*

Outline

- **Overview of the Lake Chad Basin Commission**
- **Challenges and Opportunities in the Lake Chad Basin**
- **Interventions of the LCBC**
- **Objectives and Format of the Forum**

Introduction: Lake Chad Basin Commission

- The **Lake Chad Basin Commission (LCBC)** was established on **22 May 1964** by the four riparian countries of the Lake Chad (Cameroon, Niger, Nigeria and Chad) through the Fort Lamy (N'Djamena) Convention
- The Central African Republic joined the organisation in 1996, and Libya was admitted in 2008.
- Sudan, Egypt, the Republic of Congo and the Democratic Republic of Congo (DRC) have observer status.
- The headquarters of the Commission is in N'Djamena, Chad.

Lake Chad "Basin"

The **Lake Chad Catchment Basin** covers an estimated area of 2,500,000 km² (about 8% of the African continent)

The "**Conventional Basin**", which is the jurisdictional zone of LCBC, covers an estimated area of 967,000 km², i.e. about 40% of the surface area of the Basin.

An area with **high agricultural** (fishing, agriculture, and livestock) and **environmental potential**



Mandate

- **Sustainable** and **equitable management** of **Lake Chad waters** and other transboundary water resources of the **Conventional Basin** of Lake Chad,
- **Preserve and conserve the ecosystems** of the Conventional Basin
- Promote regional integration, preserve **peace** and **security** in the Conventional Basin.



Basic
Documents
of LCBC



Fort Lamy Convention of 22
May 1964

Revised Convention
(Ndjamena, December 1990)

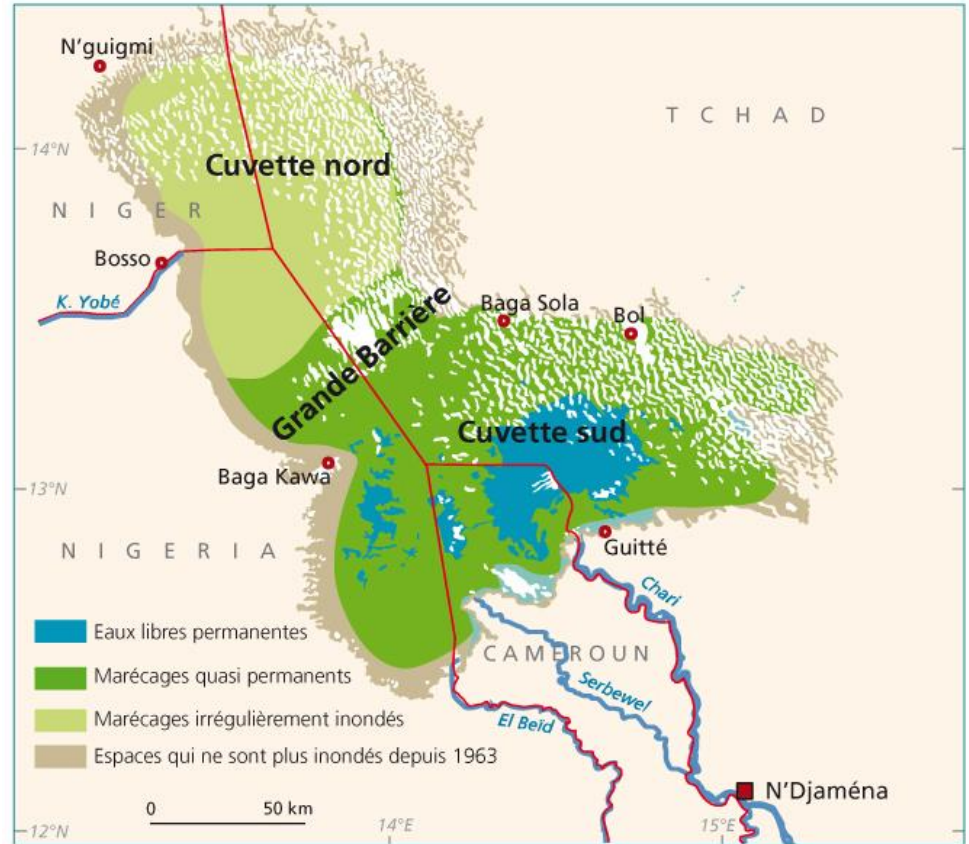
Water Charter (Ndjamena, 30
April 2012)

Lake Chad Basin Water Charter

- Clarifies and supplements provisions of the Convention and the Statute of the Lake Chad Basin Commission of 1964
- Although the LCB Water Charter has not yet “entered into force”, there is a consensus on its content among the States Parties. Ratification and submission of instruments by States Parties is well advanced and will soon enter into force.



CHALLENGES AND OPPORTUNITIES



Common Challenges

- **Conflict.** Spill over of violence from armed groups to neighbouring countries, disrupting livelihoods and leading to destruction of property. Inter-community conflicts over natural resources
- **Displacements** Africa's largest displacement crisis. A journalist has described the situation in the Lake Chad Basin as "*..the world's most complex humanitarian disaster*"
- **Variability and Climate Change** Impacts of climate variability have worsened tensions over access to natural resources across the region.



Shared Opportunities

- **A shared resource for the basin.** About 50 million people in five countries benefit from the abundant natural resources of the Lake Chad Basin.
- **Strong cross-border interdependencies and dynamics** due to cultural and linguistic ties, and seasonal mobility.
- **One of the youngest and fastest growing populations in Africa**, which could be a driver for economic growth.
- **Existence of a consultation framework** due to the political will of the member states that share the resources of the Lake Chad basin



INTERVENTIONS OF LCBC

Faced with all these environmental, security and sustainable development challenges, LCBC, in line with its mandate and in collaboration with its partners, developed strategies to address these challenges and issues of sustainable development in the basin.

Strategic Action Programme (SAP)

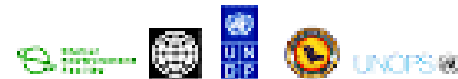
- Adopted in 2022, the SAP sets the agenda for enhanced regional cooperation over shared water and related resources among the Member States over the next fifteen years.
- A document negotiated between Member States of the Lake Chad Basin Commission (LCBC)
- Establishes **principles of environmental management and cooperation** and sets out a **long-term vision** for the sustainable development of the Lake Chad Basin;
- Presents the **major challenges for the integrated and sustainable management** of the Lake Chad Basin; sets **Environmental Quality Objectives (EQOs)** based on the priority transboundary problems (PTPs)
- Current SAP endorsed by Summit of Heads of State of the LCBC in Abuja on 29th November 2022.

Revised Land and Water Agreements Treaty
in the Lake Chad Basin System

Strategic Action Programme for the Lake Chad Basin:

Agreed by the LCBC Member States of
Cameroon, Central African Republic, Chad,
Niger, and Nigeria

Final SAP: 11 Nov 2022



SAP: Ongoing Programmes and Projects

- Programme for the Rehabilitation and Strengthening of the Resilience of Socio-ecological Systems in the Lake Chad Basin (**PRESIBALT**) - **African Development Bank**
- Emergency Programme for Youth and Vulnerable Groups in the Lake Chad Region (**PURDEP– Member States LCBC**)
- Project for the Conservation and Sustainable Development of Lake Chad: Enhancing Transboundary Cooperation and IWRM (**GEF/UNDP**)
- Applied water resources management in the Lake Chad Basin (**German Cooperation - BMZ**):
 - **Applied Water Resource Management in the Lake Chad Basin (GIZ);**
- Inter-Basin Water Transfer Project (**IBWTP**).– **Member States**
- Lake Chad Development and Climate Resilience Action Plan **with the World Bank (CIWA)**
- Project to develop the 2nd Five-Year Investment Plan of the LCBC with the support of the AfDB through the African Water Facility (AWF)



Basic social infrastructure

Restoration of ecosystems

Income-generating activities

Regional Stabilization Strategy (RSS)

Regional Strategy for the Stabilization, Recovery and Resilience of the Areas of Lake Chad Basin Affected by Boko Haram (RSS):

- Facilitate the transition from active military engagement to addressing the root causes of the crisis and the streamlining of various initiatives aimed at stabilising Boko Haram-affected areas;
- Based on nine strategic objectives, the Strategy aims to address the short, medium and long-term needs of the region for stabilisation, resilience and recovery of affected areas.



RSS: Ongoing Programmes and Projects

- **Regional Stabilization Facility for Lake Chad (UNDP)**
 - Multi-donor basket fund launched on 17 July 2019 at the 2nd Lake Chad Basin Governors' Forum in Niger, to facilitate the implementation of LCBC's regional stabilisation strategy.
 - The RSF has two types of windows:
 - 4 national windows, providing immediate stabilisation in specific target areas in the 4 affected countries, and
 - A regional window that provides extensive support for the implementation of the regional stabilisation strategy.

Project to Support the Socio-Economic Reintegration of Vulnerable Groups in the Lake Chad Basin (PARSEBALT) - African Development Bank

- contribute to improving the living conditions in the LCB, through the social and economic reintegration of the populations most affected by insecurity and climatic hazards in the region.

RSS: Ongoing Programmes and Projects

- **Lake Chad Region Recovery and Development Project (PROLAC) and the Multi-Sectoral Crisis Recovery Project (MCRP) - with the World Bank**
 - Contribute to the recovery of the Lake Chad region by supporting regional coordination and monitoring of crises, connectivity, and agricultural livelihoods in selected provinces of the Republic of Cameroon, the Republic of Chad and the Republic of Niger.
 - Improving access to basic services and livelihoods for crisis-affected communities in Adamawa, Borno and Yobe states, and strengthening coordination between these states and other Lake Chad countries.
 - Organisation of the Annual Lake Chad Region Development Forum: Second forum scheduled from 23 - 25 May in Niamey, Niger. <http://developmentforum.cblt.org/fr/>
- **Lake Chad Basin Water Security Resilience Assessment Initiative with the support of the World Bank (CIWA)**

OBJECTIVES OF THE FORUM

- Bring together development actors for regional dialogue to
 - Share lessons learnt and practical solutions on (i) natural resource development in a context of climate change, (ii) interconnectivity and socio-economic development and (iii) knowledge management for decision-making in the Lake Chad region.
 - Formulate recommendations for a more resilient and inclusive Lake Chad Region

FORMAT



- **Plenary and Thematic Sessions**

- Day 1: Plenary - Opening ceremony, technical presentations and discussions
- Day 2: Thematic workshops in small groups for in-depth technical discussions
- Day 3: Technical workshops in small groups and closing ceremony in plenary

- **Parallel workshops – Breakout rooms**

- Regional integration: Infrastructure, mobility and governance and border security;
- Agricultural development, resilience and good practices;
- Social cohesion and inclusion in the Lake Chad Basin;
- Climate Dynamics and Flood Risk Management in the Lake Chad Basin;
- Socio-economic development in the Lake Chad Basin from the perspective of women and youth;
- Access to information and data generation at the level of Project Implementation Units (PIUs), Universities and Research Institutions to populate the KMP.

- **Poster sessions by Students**



AGENDA OF DAY 1

13:30 – 15:30	SESSION 2 Natural resources development, under changing climate in the LCB
13:30 – 13:40	Objective: Identify and assess the constraints and prospects for efficient exploitation of the LCB natural resources
13:40 – 14:00	Environmental changes and water resources in the LCB
14:00 – 14:20	Effects of Climate Change on water availability in the Lake Chad Basin
14:20 – 14:50	Discussion by panellists <ul style="list-style-type: none">• Discuss challenges related to access to natural resources,• Discuss flood and drought incidents and adaptation measures.



AGENDA OF DAY 1

15:45 - 17:45	SESSION 3 Interconnectivity and socio-economic development in the Lake Chad Basin.
15:45 – 15:55	Objective: Identify and propose solutions to obstacles to the movement of people and goods in the region.
15:55 – 16:15	Constraints and prospects of integration in the LCB
16:15 – 16:35	World Bank's approach to regional integration
16:35 – 17:05	Discussion by panellists <ul style="list-style-type: none">• Discuss mobility and connectivity of humans and goods in the LCB,• Identify obstacles and proffer solutions/best practices

Email address: h.banseka@cblt.org

Website: <https://cblt.org/fr/>

Twitter: @lcbc_cblt



THANK YOU FOR YOUR KIND ATTENTION